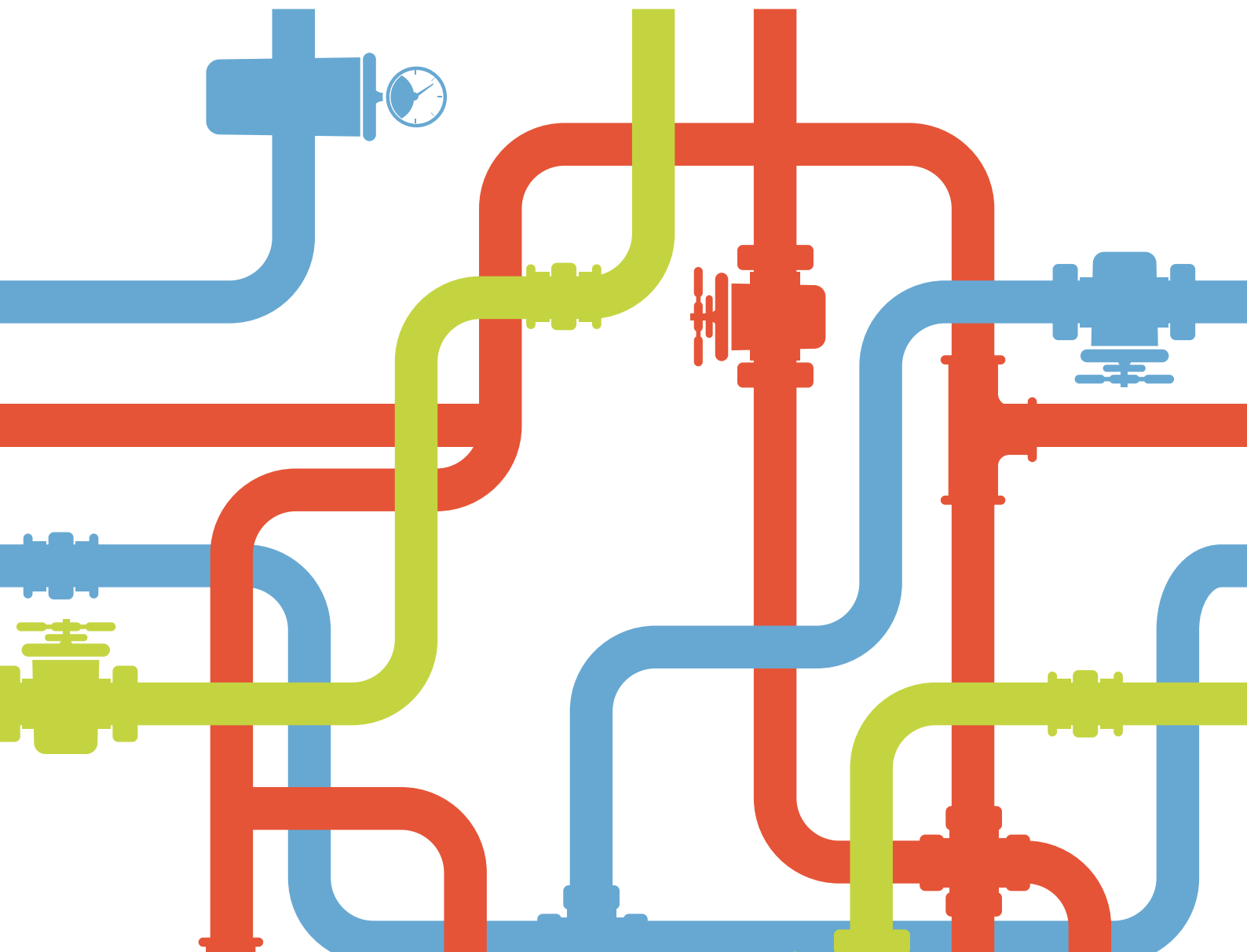

Drainage



Drainage | 1

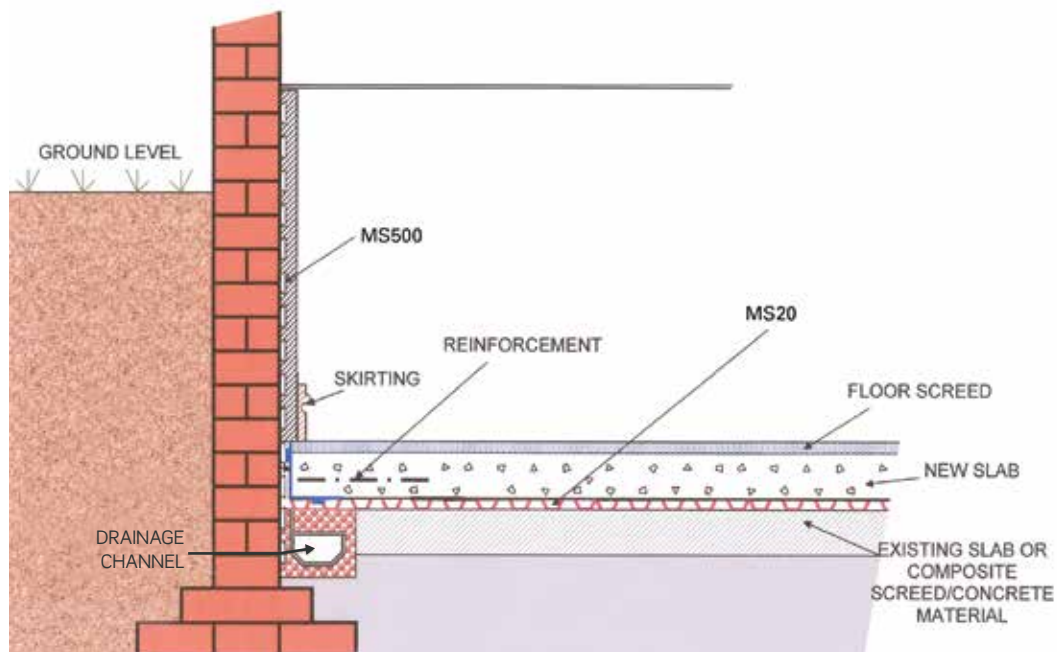
Channel Drainage System

DRAINAGE CHANNEL is a P.V.C drainage conduit designed for the control of water ingress in below ground situations. Drainage channel is fitted around the perimeter of the floor at the vulnerable wall/floor junction.

Drainage channel can be used in most waterproofing situations, and is particularly suited for use in conjunction with Cavity Drain Membrane systems. Water entering the building through the walls is controlled behind the Membrane and diverted to the drainage channel at the base of the wall. The water enters the drainage channel through pre-drilled 19mm drainage holes set 70mm apart along its length and is then diverted to a suitable drainage point, either natural or a sump and mechanical pump (see Sump System). Jetting eyes and channel to sump connectors can also be fitted into the perimeter drainage system to enable the channel to be cleaned periodically if necessary.

In situations where an existing floor slab/screed is solid and showing no signs of water ingress, cracking or de-bonding, the installation of drainage channel can eliminate the need for Cavity Drain membrane on the floor, proving beneficial in areas of limited headroom.

The application of a liquid waterproof coating to the existing floor would be recommended to act as a moisture suppressant.



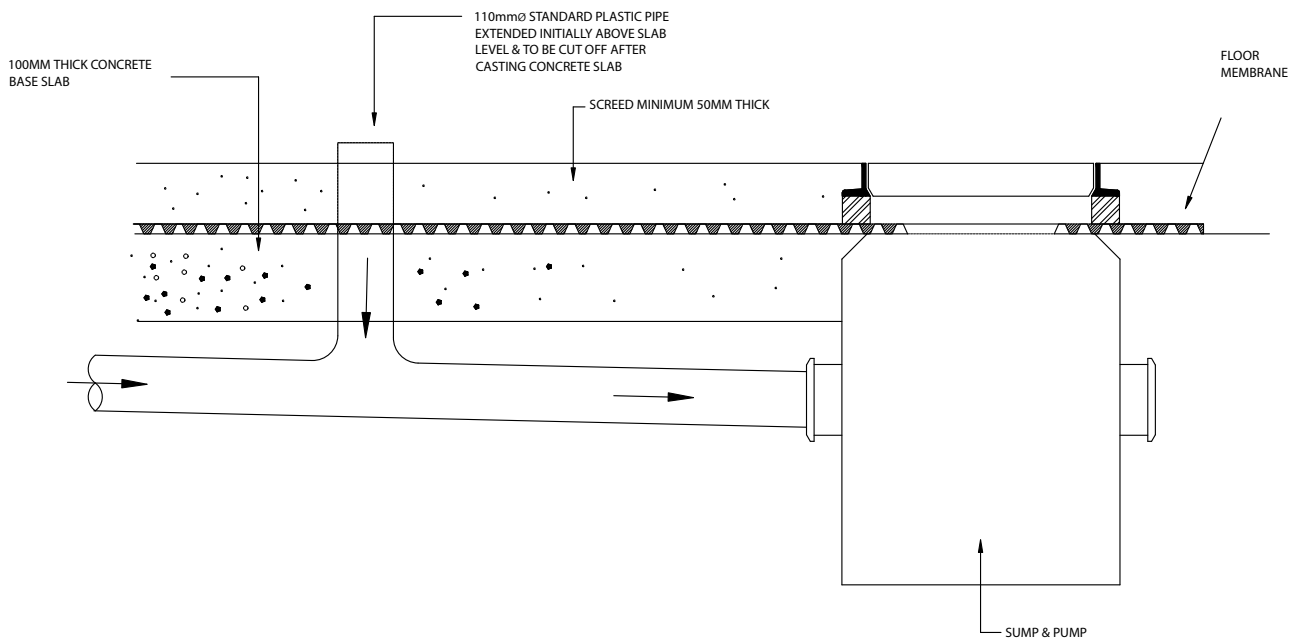
Central Drainage System

A practical alternative to the floor/wall channel drainage system.

CENTRAL DRAIN is a practical alternative to the floor/wall channel drainage system used in the conversion of existing basements, particularly where shallow foundations are encountered, which may require expensive underpinning or foundation shoring works that could involve issues under the party wall act 1996.

In new build projects where extensive steel reinforcement in the concrete floor periphery is required, this may make the floor/wall channel drainage system difficult, impractical and if possible / costly to install, the central drain can result in significant savings along with ease of installation.

The central drain comprising of a 100mm diameter feed pipe partnered with 20mm floor membrane can remove vast quantities of ingessed water, which can be harmlessly discharged into the main drainage system.



Aqua Drain System

The AQUA DRAIN is a drainage channel which acts as a perimeter conduit bedded in at the floor/wall angle. Where appropriate, the aqua drain can be used for draining away externally protected systems.

Aqua drain is fully perforated for maximum performance, and incorporates an outer geotextile filter to prevent particles from entering the channel. Aqua drain is available in various diameters to suit the ground conditions.

